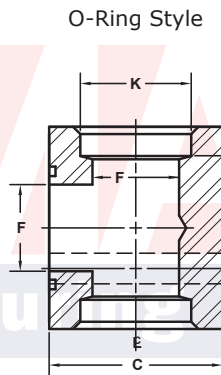
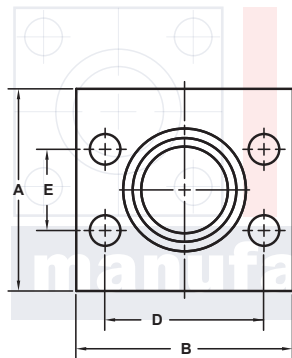
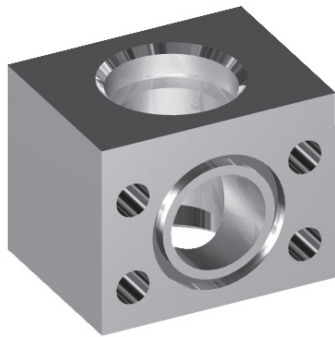


SOCKET WELD PIPE BRANCH TEE FLANGES

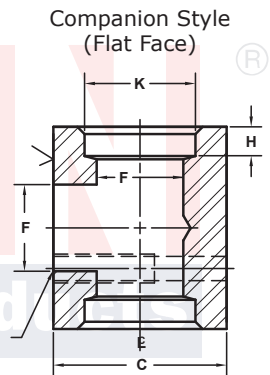
SAE J518 61 SERIES / ISO6162-1 PATTERN

FLANGE SIZE	PIPE SIZE	PART NUMBER	A	B	C	D	E	F	Gmm	H	K	MOUNTING KIT®			WT
									Jmm			PART NO.	SCREW SIZE	O-RING	
1/2	1/2	1165-08-08M8	2.00	2.12	1.44	1.500	.688	.50	8.5	.38	.860	MKM 541	M8 x 50	210	1.3
		M8x1.25							-----			---			
3/4	3/4	1165-12-12M10	2.25	2.62	1.70	1.875	.875	.75	10.5	.50	1.070	MKM 542	M10 x 60	214	2.2
		M10x1.5							-----			---			
1	1	1165-16-16M10	2.50	2.82	1.94	2.062	1.031	1.00	10.5	.50	1.335	MKM 543	M10 x 65	219	2.8
		M10x1.5							-----			---			
1 1/4	1 1/4	1165-20-20M10†	3.00	3.19	2.40	2.312	1.188	1.25	10.5	.50	1.680	MKM 4532	M10 x 75	222	4.5
		M10x1.5							-----			---			
1 1/2	1 1/2	1165-24-24M12‡	3.50	3.75	2.90	2.750	1.406	1.50	13.0	.50	1.920	MKM 4533	M12 x 90	225	7.7
		M12x1.75							-----			---			
2	2	1165-32-32M12‡	3.75	4.00	3.40	3.062	1.688	1.94	13.0	.50	2.411	MKM 4534	M12 x 100	228	9.3
		M12x1.75							-----			---			
2 1/2 ^②	2 1/2	1165-40-40M12‡	4.00	4.50	3.96	3.500	2.000	2.44	13.0	.50	2.911	MKM 4535	M12 x 120	232	12.0
		M12x1.75							-----			---			
3 ^③	3	1165-48-48M16	5.00	5.31	4.96	4.188	2.438	2.94	17.0	.62	3.540	MKM 548	M16 x 150	237	22.2
		M16x2							-----			---			
3 1/2 ^④	3 1/2	1165-56-56M16	6.00	6.00	5.40	4.750	2.750	3.44	17.0	.62	4.045	MKM 549	M16 x 160	241	32.5
		M16x2							-----			---			
4 ^④	4	1165-64-64M16	6.00	6.38	5.96	5.125	3.062	3.94	17.0	.62	4.550	MKM 550	M16 x 180	245	35.5
		M16x2							-----			---			
5 ^④	5	1165-80-80M16	7.25	7.25	6.90	6.000	3.625	4.94	17.0	.62	5.635	MKM 1569	M16 x 200	253	50.7
		M16x2							-----			---			

MATERIAL:
Low Carbon Steel



Model 1165 / 1167



Model 1166 / 1168

3181 TRI-PARK DR. GRAND BLANC, MI 48439 800-521-7918 810-953-1380 FAX 810-953-1385 INFO@MAINMFG.COM

SAE J518 62 SERIES / ISO6162-2 PATTERN

FLANGE SIZE	PIPE SIZE	PART NUMBER	A	B	C	D	E	F	Gmm	H	K	MOUNTING KIT®			WT
									Jmm			PART NO.	SCREW SIZE	O-RING	
1/2	1/2	1167-08-08M8	2.00	2.22	1.46	1.594	.718	.50	8.5	.38	.860	MKM 541	M8 x 50	210	1.5
		M8x1.25							-----			---			
3/4	3/4	1167-12-12M10	2.50	2.81	1.70	2.000	.937	.75	10.5	.50	1.070	MKM 542	M10 x 60	214	2.7
		M10x1.5							-----			---			
1	1	1167-16-16M12	2.75	3.19	2.21	2.250	1.093	1.00	12.5	.50	1.335	MKM 2533	M12 x 75	219	4.2
		M12x1.75							-----			---			
1 1/4	1 1/4	1167-20-20M12‡	3.00	3.75	2.44	2.625	1.250	1.25	13.0	.50	1.680	MKM 578	M12 x 80	222	5.7
		M12x1.75							-----			---			
1 1/2	1 1/2	1167-24-24M16	3.50	4.50	2.96	3.125	1.437	1.50	17.0	.50	1.920	MKM 553	M16 x 100	225	9.7
		M16x2							-----			---			
2	2	1167-32-32M20	4.00	5.25	3.46	3.812	1.750	1.94	21.0	.50	2.411	MKM 554	M20 x 120	228	14.5
		M20x2.5							-----			---			
2 1/2	2 1/2	1167-40-40M24	5.50	6.88	4.50	4.875	2.312	2.44	25.5	.62	2.911	MKM 2557	M24 x 150	232	35.4
		M24x3							-----			---			
3	3	1167-48-48M30	6.00	8.50	5.00	6.000	2.812	2.94	32.0	.62	3.540	MKM 556	M30 x 180	237	51.0
		M30x3.5							-----			---			

① Order Separately ② 2500 PSI Max ③ 2000 PSI Max ④ 500 PSI Max

NOTE: DIMENSIONS ARE IN INCHES UNLESS OTHERWISE NOTED. † Also Available for M12 Bolts ‡ Also Available for M14 Bolts

© Copyright MAIN Mfg. 2017