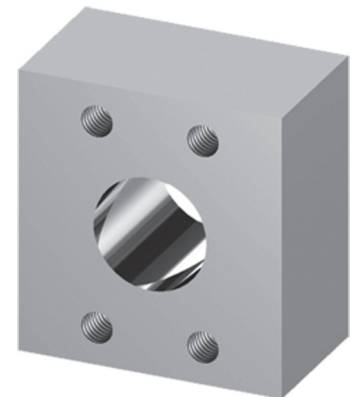
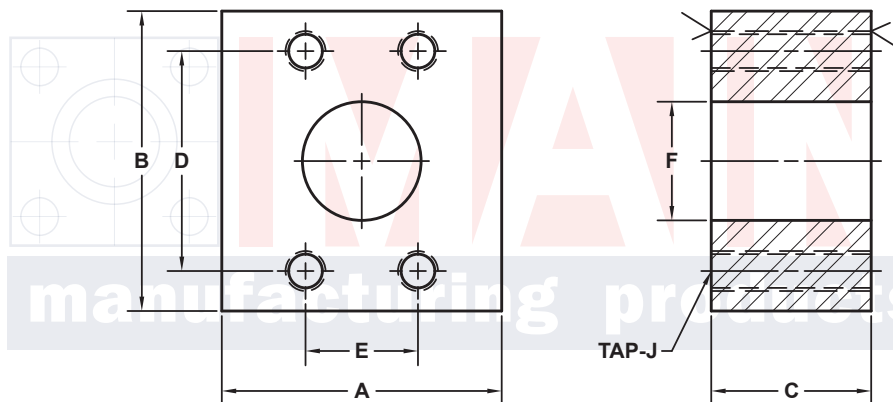


# CONNECTOR BLOCKS

## SAE J518 61 SERIES / ISO6162-1 PATTERN

FLANGE SIZE	PIPE SIZE	PART NUMBER	A	B	C	D	E	F	Jmm	WT
1/2	NA	1304-08-08M8	2.00	2.12	1.75	1.500	.688	.50	M8x1.25	1.8
3/4	NA	1304-12-12M10	2.00	2.62	1.75	1.875	.875	.75	M10x1.5	2.1
1	NA	1304-16-16M10	2.25	2.75	1.75	2.062	1.031	1.00	M10x1.5	2.4
1 1/4	NA	1304-20-20M10+	3.00	3.19	2.00	2.312	1.188	1.25	M10x1.5	4.4
1 1/2	NA	1304-24-24M12‡	3.50	3.75	2.25	2.750	1.406	1.50	M12x1.75	5.9
2	NA	1304-32-32M12‡	3.88	4.00	2.25	3.062	1.688	1.94	M12x1.75	6.6
2 1/2 <sup>②</sup>	NA	1304-40-40M12‡	4.38	4.50	2.25	3.500	2.000	2.44	M12x1.75	9.1
3 <sup>③</sup>	NA	1304-48-48M16	5.00	5.31	2.50	4.188	2.438	2.94	M16x2	11.9

MATERIAL:  
Low Carbon Steel<sup>®</sup>



3181 TRI-PARK DR. GRAND BLANC, MI 48439 800-521-7918 810-953-1380 FAX 810-953-1385 INFO@MAINMFG.COM

## SAE J518 62 SERIES / ISO6162-2 PATTERN

FLANGE SIZE	PIPE SIZE	PART NUMBER	A	B	C	D	E	F	Jmm	WT
1/2	NA	1306-08-08M8	2.00	2.22	1.75	1.594	.718	.50	M8x1.25	1.9
3/4	NA	1306-12-12M10	2.50	2.81	2.00	2.000	.937	.75	M10x1.5	3.4
1	NA	1306-16-16M12	2.75	3.19	2.00	2.250	1.093	1.00	M12x1.75	4.2
1 1/4	NA	1306-20-20M12‡	3.00	3.75	2.00	2.625	1.250	1.25	M12x1.75	5.2
1 1/2	NA	1306-24-24M16	3.88	4.50	2.88	3.125	1.437	1.50	M16x2	12.1
2	NA	1306-32-32M20	4.50	5.25	3.00	3.812	1.750	1.94	M20x2.5	16.2

② 2500 PSI Max ③ 2000 PSI Max

® May Contain Lead

NOTE: DIMENSIONS ARE IN INCHES UNLESS OTHERWISE NOTED. + Also Available for M12 Bolts ‡ Also Available for M14 Bolts

© Copyright MAIN Mfg. 2017